



Product specs

Rated voltage	110-120V
Rated frequency	50Hz/60Hz
Product usage	Removes pollutants such as particulate matter, gas pollutants and microorganisms in the air.
3-in-1 filter	Pre-filter + anti-virus HEPA + carbon
Rated power	50W
Particulates CADR	183.8 ft ³ /min
Energy efficiency index	High efficiency (particulate)
Noise	63 dB(A)
Room size	388-667 ft ²
Product size	11.8 (l) x 11.8 (w) x 23.1 (h) in
Weight	12.8 lbs

Includes 1x air purifier, 1x air filter, 1x remote control & 1x product manual.

KEY FEATURES



Negative ion disinfection



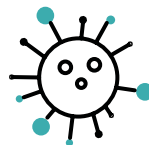
Wi-Fi



Touch controls



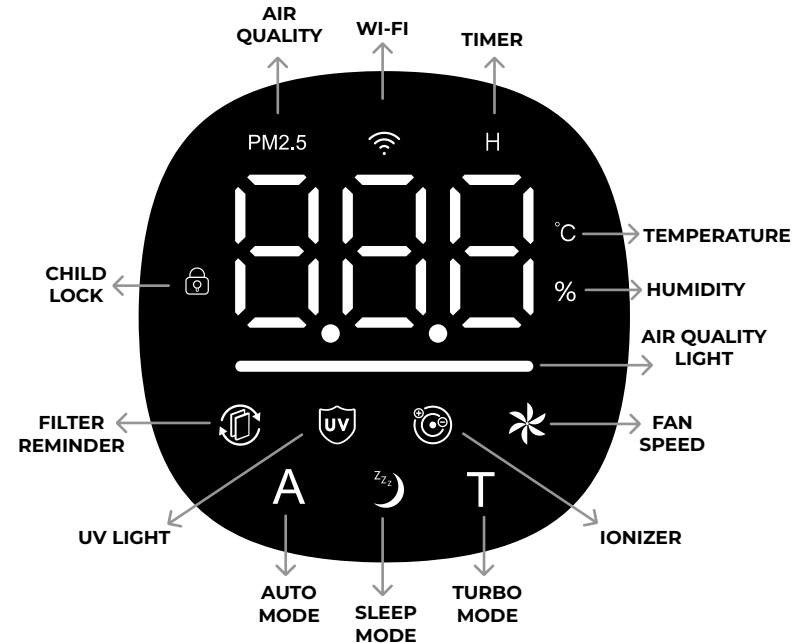
UV disinfection



Antibacterial filter

Display panel

The display panel will cycle through real-time insights on air quality (PM2.5), temperature (°C), and humidity (%).



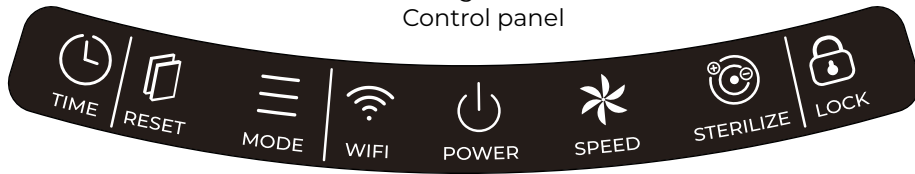
AIR QUALITY

Good air quality	Green light	1-100 AQI*
Moderate air quality	Yellow light	101-200 AQI*
Poor air quality	Red light	201-500 AQI*

*AQI: Air quality index

Operations & controls

Figure 1
Control panel



Operate the air purifier by using the buttons on the control panel (Figure 1). The illuminated display screen will showcase the active functions and room readings.



Power ON/OFF

Press the power icon to alternate between on (white icon) and off (red icon). After the purifier is turned on, auto mode and the sterilize function will automatically turn on.



Fan speed

Press the fan icon to cycle through speed 1, 2, 3, 4, and 5.



Mode

Press to cycle through auto, turbo, and sleep mode.

- Sleep mode: the moon icon is illuminated and other icons are off. Press any button to wake up the display.
- Auto mode: the purifier will select a speed based on the current air quality.
- Turbo mode: an extra boost of efficiency accelerates the air purifying process, swiftly capturing and eliminating even the tiniest particles.



Wi-Fi

The Wi-Fi icon will be illuminated when the purifier is connected to Wi-Fi. See page 7 for instructions on connecting.



Timer

Press the timer icon on the control panel to adjust the run time within the range of 1-8 hours. Hold the button for 2 seconds to cancel the timer. The display screen will notify you that a timer is set by illuminating the "H" on the display panel.



Sterilize

Press the sterilize icon to switch the UV and ionizer feature on/off. The UV shield and ion icons are highlighted when the function is on.



Filter reset indicator

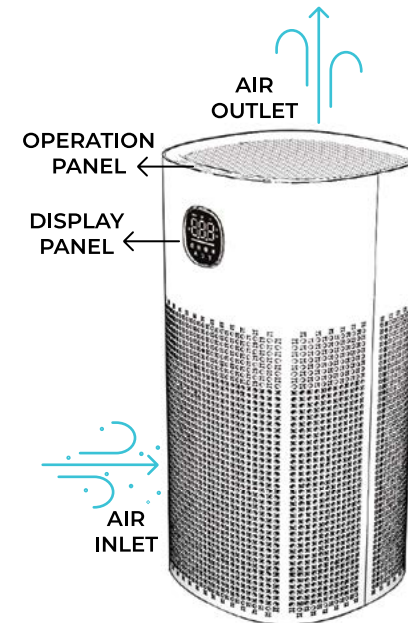
The filter icon flashes white when it's time for replacement. Reset the reminder by holding the icon for 3 seconds after changing the filter.

Note: If the timer is on, you will not be able to reset the filter. Cancel the timer by holding the icon on the operation panel for 2 seconds before trying to reset the filter reminder.



Child lock

Press and hold the lock icon for 3 seconds to engage/ disengage the child lock. When the child lock is on, no changes can be made to the settings until the child lock is turned off.



Filter care

FILTER INSTALLATION & REMOVAL

Installation

Insert the filter at the machine's bottom (figure 2), twist clockwise to tighten (figure 1).

Note: Remember to remove the plastic bag from the filter before installing.

Removal

Twist counterclockwise (figure 1) from the machine's bottom to rotate and pull out the filter (figure 2 & 3).

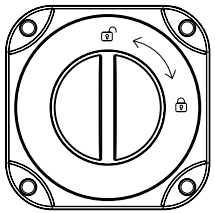


Figure 1

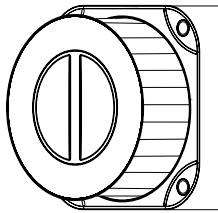


Figure 2

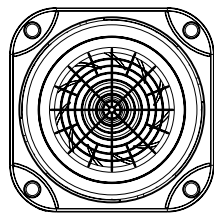



Figure 3

FILTER REPLACEMENT REMINDER

Approximately every 1500 hours (around 2 months), the filter icon  will flash slowly on the display, indicating that it's time to replace the filter. Reset the reminder by holding the icon for 3 seconds after changing the filter. The replacement reminder will be triggered again after the next 1500 hours.

Note: If the timer is on, you will not be able to reset the filter. Cancel the timer by holding the icon on the operation panel for 2 seconds before trying to reset the filter reminder.

Tips

- DO NOT operate without the filter to avoid equipment failure.
- The filter may need to be replaced more frequently if used in an area with heavy air pollution. Promptly replace if filtration effectiveness is diminished.
- Immediately discard used filters.
- *DO NOT WASH THE FILTER WITH WATER.*

PURCHASING REPLACEMENT FILTERS

Replacement filters can be purchased on verapure.com.

Compatible filter #: VP-300-F



CAUTION

Disconnect the power before performing any maintenance.



Safety guidelines

For optimal air circulation, place the purifier at least 1 foot away from walls, furniture, curtains, and other objects.

Place on a flat and stable surface

Ensure the stability of your air purifier by placing it on a flat and stable surface. The machine must not move or shake during operation. Avoid precarious positions to prevent the risk of the product falling over, which could lead to injury, electric shock, or fire hazards.

Combating indoor dust (pollen)

Place purifier on the ground since pollen and dust are likely to fall near the floor.



CAUTION

Keep water and flammable detergents/ liquids away from the product to prevent electric shock or fire.

RESTRICTIONS

Avoid wet, humid & hot environments

Do not use in wet or hot environments such as bathrooms.

Avoid direct sunlight

Direct sunlight and heat may cause deformation, deterioration, discoloration, and failure.

Avoid locations emitting soot

Do not use near gas appliances, heating devices, or stove accessories.

Do not use with incense, incense-based insecticides & mosquito coils

Never use air purifiers with incense-based insecticides; allow thorough ventilation after insecticide use before operating the air purifier.

It is not recommended to use the air purifier during the burning of incense or mosquito coils, as it may leave unwanted odors in the filter.

Note: The machine may collect chemical residues, which can later be released from the air outlet, posing a threat to your health.

Avoid placing directly next to TVs and radios

Keep a minimum distance of 3 feet between the air purifier and TVs or radios to prevent electrical interference, which may cause image distortion or noise. If using the same socket as a TV or radio results in image problems or noise, move the air purifier to a different outlet.

PRODUCT SAFETY STANDARDS

International electrotechnical commission (IEC)

This device is not intended for use by individuals (including children) with reduced physical, sensory, or mental capabilities, or those lacking experience and knowledge, unless they are under the supervision or have received instructions regarding its safe use from a person responsible for their safety. Children should be supervised to ensure they do not play with the device.

European norm (EN)

This device is suitable for use by children 8 years and older and individuals with reduced physical, sensory, or mental capabilities or lack of experience and knowledge, provided they have received supervision or instructions on safe usage and understand the associated hazards. Children must not play with the device. Cleaning and user maintenance should not be performed by children without supervision.

Safety guidelines

Use this air purifier only as described in the manual. If the directions are not followed, an electric shock or fire may result causing property damage, personal injury or death. For any maintenance other than filter replacement, please contact an authorized service representative.

Intended use

This product is not a substitute for regular ventilation equipment, vacuum cleaners, or kitchen range hoods.

Water exposure precaution

Prior to connecting the power cord, ensure both the plug and your hands are dry to mitigate the risk of electric shock.

AIR OUTLET & INLET SAFETY

- Do not block the air inlet & outlet.
- Do not place any objects on or in front of the unit.
- Do not insert fingers or metal objects into the air outlet gap.
- Do not allow water, flammable detergents or other liquids to enter the product to avoid electric shock or fire.

POWER CONNECTION GUIDELINES:

Do not damage, cut, excessively twist, or pull on the power cord. If the power cord is damaged, seek professional assistance for replacement to avoid danger and the risk of electric shock.

Plug securely into the power outlet

Do not use a damaged plug or a loose power outlet.

Pull power plug from the base, not the cord

Unplug the purifier by pulling from the plug base. Avoid pulling the power cord to prevent short circuits, damage, and potential fire or electric shock hazards.

Power supply limits

Do not use power supplies or universal sockets that exceed the rated value (110V ~ 5A AC power) to prevent overheating and fire hazards.

Clean the power plug regularly

Dusty power plugs are a fire hazard. Wipe off the plug regularly with a dry cloth.

Standby power consumption

Unplug the power cord during extended idle periods to prevent standby power consumption.

PRODUCT DISPOSAL

This product must not be treated as household waste. Please hand it over to the appropriate collection point designated for the recycling of electrical and electronic equipment.

For more detailed information regarding the recycling of this product, kindly contact your local city office or your household waste disposal service.



CAUTION

Promptly power off the device and request maintenance if experiencing any of the following:

- Non-functional switch
- Unusual sound or vibration
- Excessive heat in cord or device
- Burnt odor
- Any other abnormalities or malfunctions

Wi-Fi setup

It's essential to note that the app might undergo updates over time. As a result, the app prompts you encounter may differ slightly from the manual. For the most accurate and up-to-date guidance, follow the prompts within the app.

1 Getting started with the Smart Life App

Download the app by scanning the QR code or search for Smart Life in the [Apple App Store](#) or on [Google Play](#). Once the app is downloaded, sign up, and agree to the User Agreement and Privacy Policy.



2 Add device

- When the machine is in standby (plugged in but off), press and hold the mode (Wi-Fi) button on the control panel for 5 seconds until the Wi-Fi indicator light begins flashing.
- In the app, tap the plus icon in the top right corner.
- Select "Add device." Choose "Small home appliance."
- Tap "Air purifier (Wi-Fi)."

3 Configuration mode

Confirm the Wi-Fi indicator light on control panel is flashing quickly, then click "Finish network configuration".

4 Choose Wi-Fi

Enter your case-sensitive Wi-Fi network name and password, then tap "Confirm."

Note: Your phone needs to be connected to the same Wi-Fi that you want to connect your air purifier to.

5 Configuration process

Wait for the connection to be completed. Please be patient, as this may take a few minutes. The app will notify you that the device was successfully added. Select "done" to enter the purifier's control interface.



Need help?

435-752-6611 support@verapure.com verapure.com

Troubleshooting guide

Won't turn on/non-functional button

- Confirm the power cord is plugged in.
- Verify that nothing is blocking the air inlet/outlet.
- Replace the filter if needed.

Strange odor

Ensure the filter is removed from the plastic bag and installed correctly before use. Installation instructions can be found on the reverse side of this manual.

Inadequate air quality improvement

Check the filter alarm light. If the filter reminder is illuminated, it signals that it is time for a filter replacement. Reset the filter reminder after replacing the filter.

Note: Regularly replace the filter when it becomes dirty to ensure optimal air quality improvement. If prolonged operation doesn't significantly enhance air quality, consider replacing the filter.

Returns & exchanges

30 DAY RETURN POLICY

Air purifiers purchased directly from VeraPure can receive a refund of the total sales amount if the following conditions are met within 30 days:

1. Product must be in new condition.
2. Product is packed in the original manufacturers box and packing material.
3. Original manuals and accessories are included in package.

Note: After 30 days from the purchase date, the buyer is responsible for all freight/shipping charges associated with exchanges, refunds, or warranty claims for the purchased product.

1-year limited warranty

The manufacturer warrants this product and included accessories against defects in materials and workmanship under normal use for a period of ONE (1) YEAR from the date of retail purchase by the original end-user purchaser.

For exceptions and warranty redemption instructions, visit our website at verapure.com.