

Filter installation & removal

Approximately every 1500 hours (around 2 months), the filter icon  will flash blue slowly, indicating that it's time to replace the filter. Disconnect the power before replacing the filter.

INSTALLATION

Insert the filter at the machine's bottom (figure 2), twist clockwise to tighten (figure 1).

Note: Remove the plastic bag from the filter before installing.

REMOVAL

Twist counterclockwise (figure 1) from the machine's bottom to rotate and pull out the filter (figure 2 & 3).

RESET REPLACEMENT REMINDER

To reset the filter replacement prompt, press and hold the filter icon for 3 seconds.

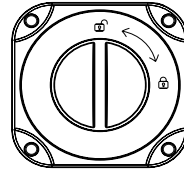


Figure 1

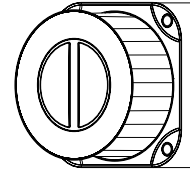


Figure 2

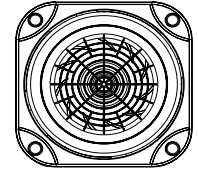


Figure 3

TIPS

- DO NOT operate without the filter.
- Filters may need to be replaced more frequently if used in an area with heavy air pollution. Replace if filtration effectiveness is diminished.
- Immediately discard used filters.
- DO NOT wash the filter with water.

Need help?

435-752-6611

support@verapure.com

verapure.com

